

EMUGE Collets for Taps / Roll Form Taps

- Product Finder
- Soft-synchro
- KSN
- MQL
- SFM
- SWITCH-MASTER
- GRN-NC
- SPEED-SYNCHRO
- HF
- EM
- Accessories
- Tech. Info

ER-GB

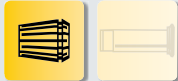
Metric

DIN ISO 15488 (DIN 6499)

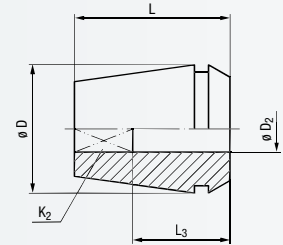


p_{max}
700psi
(50bar)

p_{max}
1400psi
(100bar)



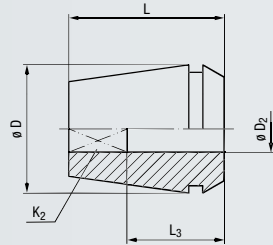
With square drive



Type		ER 11 GB			ER 16 GB			ER 20 GB							
		M2 - M8			M4 - M12			M4 - M12							
Collet		$\varnothing D$			11			16			20				
Dimensions (mm)		L			18			27.5			31.5				
DIN				EDP Number		L ₃		EDP Number		L ₃		EDP Number		L ₃	
mm															
$\varnothing D_2$	K ₂														
2.8	2.1	M2 - M2.6	M4	F0942011.2.8	12	●									
3.5	2.7	M3	M4.5 - M5	F0942011.3.5	14	●									
4	3	M3.5	M5.5	F0942011.4	14	●									
4.5	3.4	M4	M6	F0942011.4.5	14	●	F0942016.4.5	15	●	F0942020.4.5	15	●			
6	4.9	M4.5 - M6	M8	F0942011.6	14	●	F0942016.6	18	●	F0942020.6	18	●			
7	5.5	M7	M9 - M10				F0942016.7	18	●	F0942020.7	18	●			
8	6.2	M8	M11				F0942016.8	22	●	F0942020.8	22	●			
9	7	M9	M12				F0942016.9	22	●	F0942020.9	22	●			
10	8	M10								F0942020.10	25	●			

Type		ER 25 GB			ER 32 GB			ER 40 GB			ER 50 GB					
		M4 - M20			M4 - M20			M9 - M30			M30 - M42					
Collet		$\varnothing D$			25			32			40			51		
Dimensions (mm)		L			34			40			46			60		
DIN				EDP Number		L ₃		EDP Number		L ₃		EDP Number		L ₃		
mm																
$\varnothing D_2$	K ₂															
4.5	3.4	M4	M6	F0942025.4.5	15	●	F0942032.4.5	15	●							
6	4.9	M4.5 - M6	M8	F0942025.6	18	●	F0942032.6	18	●							
7	5.5	M7	M9 - M10	F0942025.7	18	●	F0942032.7	18	●							
8	6.2	M8	M11	F0942025.8	22	●	F0942032.8	22	●							
9	7	M9	M12	F0942025.9	22	●	F0942032.9	22	●	F0942040.9	22	●				
10	8	M10		F0942025.10	25	●	F0942032.10	25	●	F0942040.10	25	●				
11	9		M14	F0942025.11	25	●	F0942032.11	25	●	F0942040.11	25	●				
12	9		M16	F0942025.12	25	●	F0942032.12	25	●	F0942040.12	25	●				
14	11		M18	F0942025.14	25	●	F0942032.14	25	●	F0942040.14	25	●				
16	12		M20	F0942025.16	25	●	F0942032.16	25	●	F0942040.16	25	●				
18	14.5		M22 - M24							F0942040.18	25	●				
20	16		M27							F0942040.20	28	●				
22	18		M30							F0942040.22	28	●	F0942050.22	41	●	
25	20		M33										F0942050.25	41	●	
28	22		M36										F0942050.28	41	●	
32	24		M39 - M42										F0942050.32	41	●	

With square drive



ER-GB

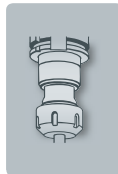
Inch

DIN ISO 15488 (DIN 6499)



- Product Finder
- Soft-synchro
- KSN
- MQL
- SFM
- SWITCH-MASTER
- GRN-NC
- SPEED-SYNCHRO
- HF
- EM
- Accessories
- Tech. Info

Type	ER 11 GB		ER 20 GB		ER 32 GB		ER 40 GB		ER 50 GB	
	No.0 - No.6		No.8 - 1/2		1/4 - 3/4		1/4 - 1		1 - 1 1/2	
Collet	Ø D		Ø D		Ø D		Ø D		Ø D	
Dimensions (inch)	L		L		L		L		L	
ASME										
	inch									
	Ø D ₂	K ₂	EDP Number	L ₃	EDP Number	L ₃	EDP Number	L ₃	EDP Number	L ₃
0.141	0.110	No.0-No.6	F0942011.3.58	0.55 ●	F0942020.4.27	0.71 ●				
0.168	0.131	No.8			F0942020.4.93	0.71 ●				
0.194	0.152	No.10			F0942020.5.59	0.71 ●				
0.220	0.165	No.12			F0942020.6.48	0.71 ●	F0942032.6.48	0.71 ●	F0942040.6.48	0.71 ●
0.255	0.191	1/4			F0942020.7.94	0.87 ●	F0942032.7.94	0.87 ●	F0942040.7.94	0.87 ●
0.3125	0.234	1/16 NPT			F0942020.8.08	0.87 ●	F0942032.8.08	0.87 ●	F0942040.8.08	0.87 ●
0.318	0.238	5/16			F0942020.8.20	0.87 ●	F0942032.8.20	0.87 ●	F0942040.8.20	0.87 ●
0.323	0.242	7/16			F0942020.9.32	0.87 ●	F0942032.9.32	0.87 ●	F0942040.9.32	0.87 ●
0.367	0.275	1/2			F0942020.9.68	0.87 ●	F0942032.9.68	0.87 ●	F0942040.9.68	0.87 ●
0.381	0.286	3/8					F0942032.10.90	0.98 ●	F0942040.10.90	0.98 ●
0.429	0.322	9/16					F0942032.11.11	0.98 ●	F0942040.11.11	0.98 ●
0.4375	0.328	1/8 NPT					F0942032.12.19	0.98 ●	F0942040.12.19	0.98 ●
0.480	0.360	5/8					F0942032.13.77	0.98 ●	F0942040.13.77	0.98 ●
0.542	0.406	11/16					F0942032.14.29	0.98 ●	F0942040.14.29	0.98 ●
0.5625	0.421	1/4 NPT					F0942032.14.99	0.98 ●	F0942040.14.99	0.98 ●
0.590	0.442	3/4							F0942040.17.70	0.98 ●
0.697	0.523	7/8							F0942040.20.32	1.10 ●
0.800	0.600	1							F0942050.20.32	1.61 ●
0.896	0.672	1 1/8							F0942050.22.75	1.61 ●
1.021	0.766	1 1/4							F0942050.25.93	1.61 ●
1.108	0.831	1 3/8							F0942050.28.14	1.61 ●
1.233	0.925	1 1/2							F0942050.31.31	1.61 ●



● = In stock